

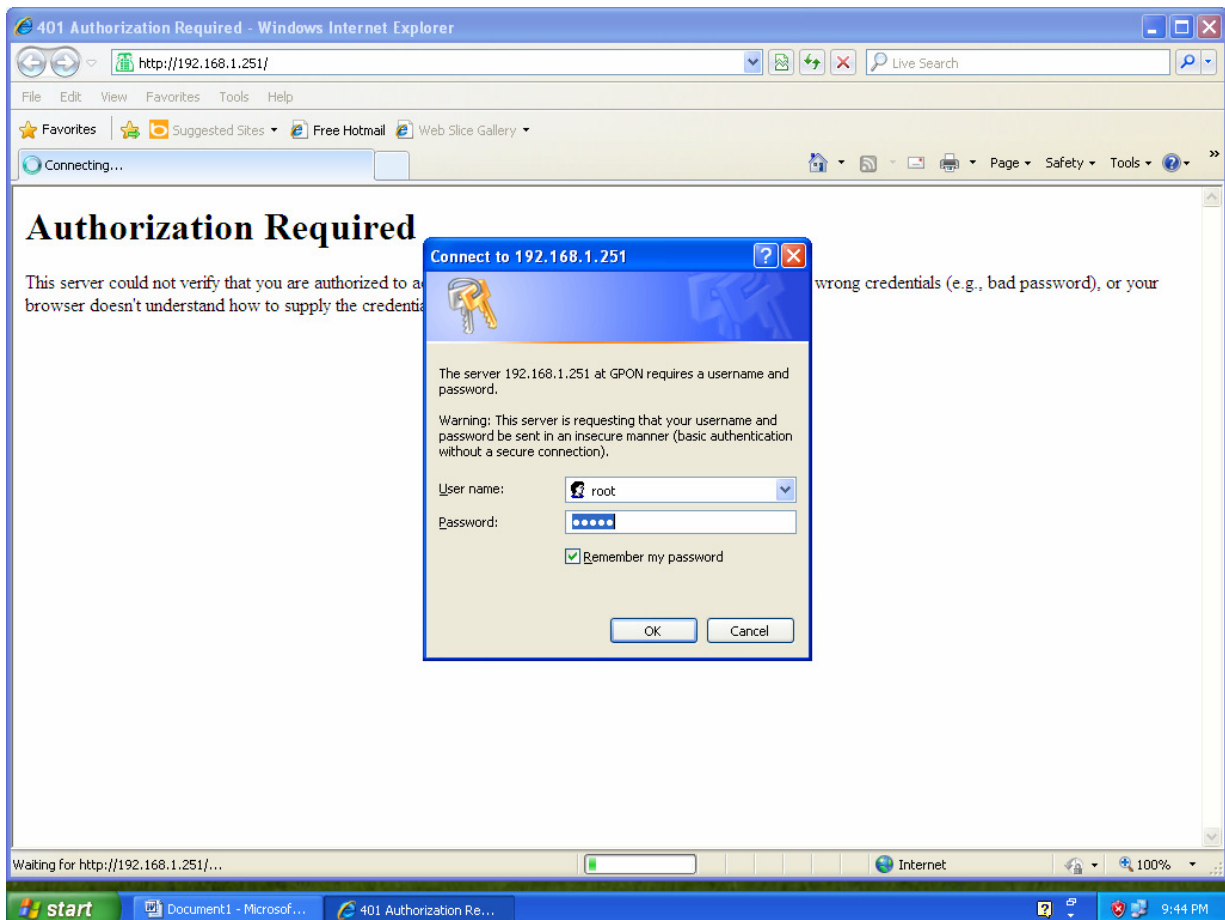
Screen shot for ONT Configuration

1] Type `http://192.168.1.251` in internet browser

You will get Screen and enter

Username :- **root**

Password :- **admin**



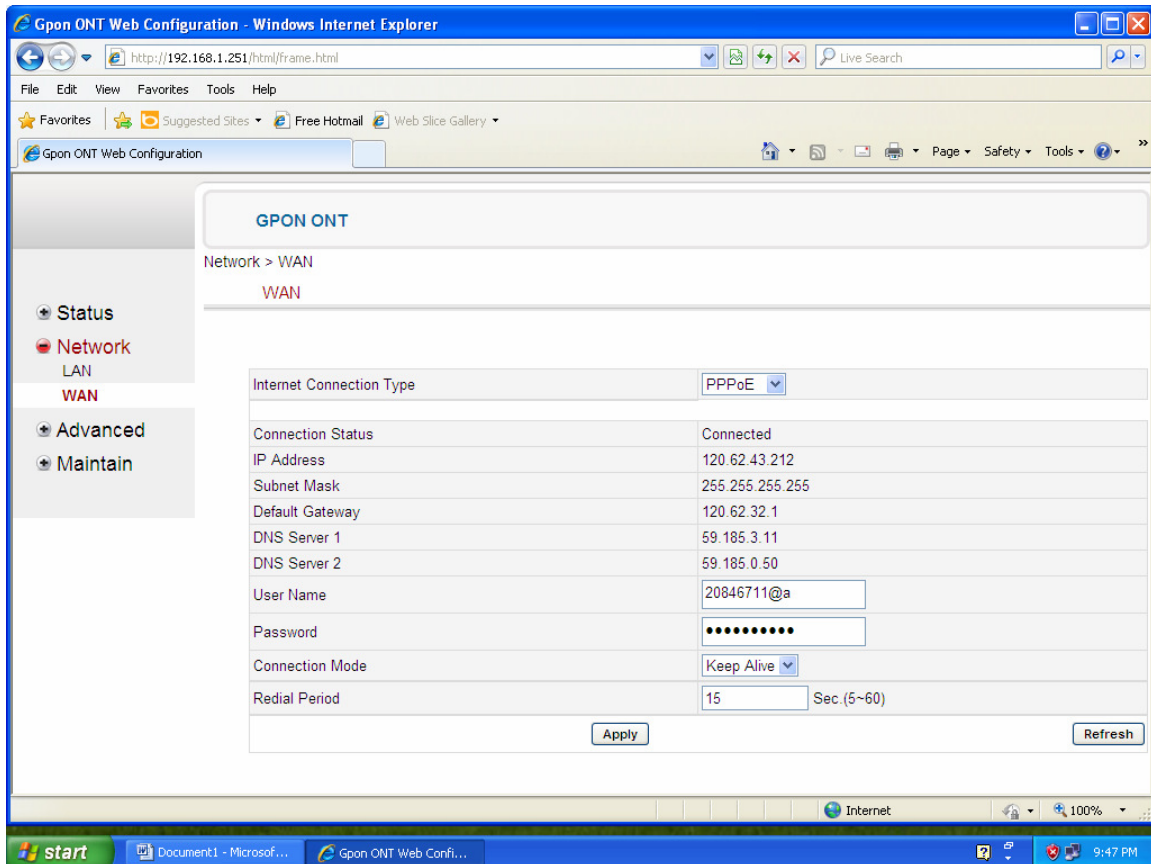
2] Click on “**Network**”
Click on “**WAN**”

Then Enter

User Name as “**Telephone no. suffixed with @a**”

Password as “**Customer CA No.**”

Click on “**Apply**” Button.

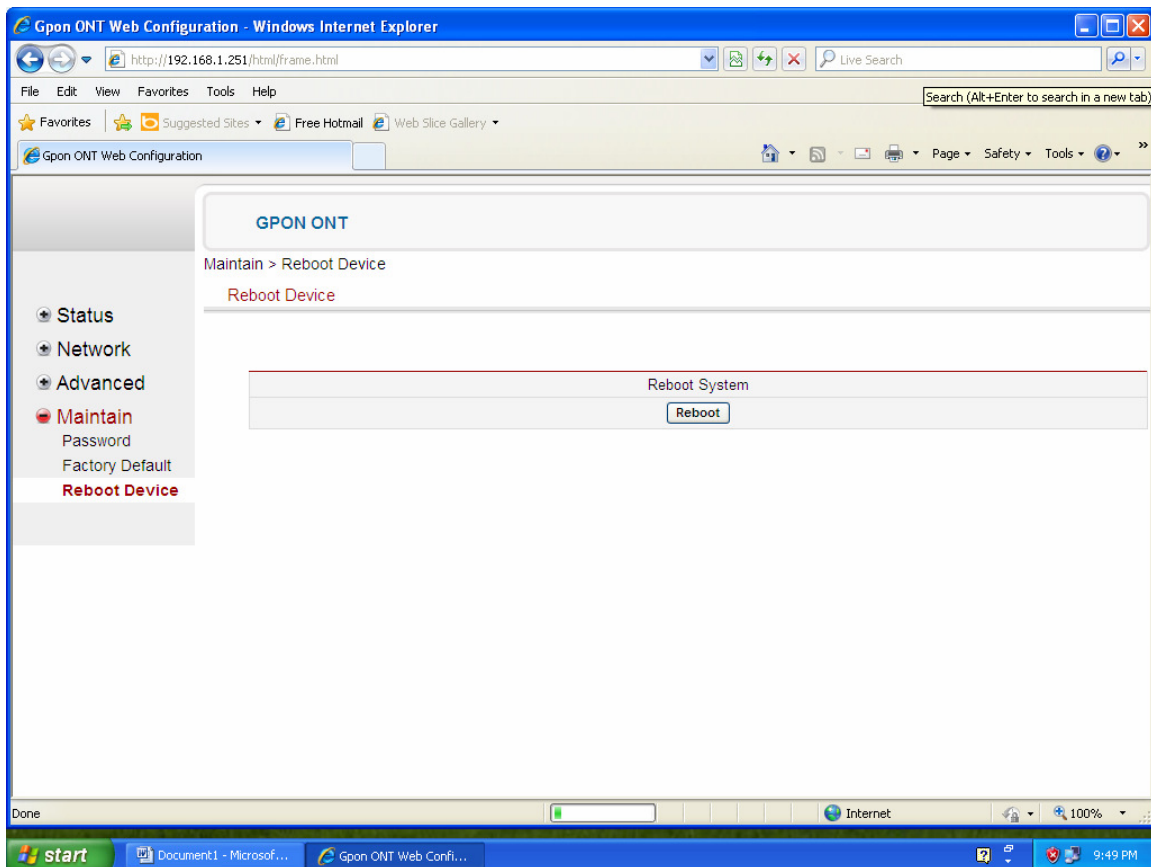


3] Click on “**Maintain**”

Click on “**Restore Device**”

Click in “**Reboot**” Button

Then wait for two minutes for ONT booting



Congratulation!
ONT is configured.

Thanks
DE BB HD