

VDSL Modem Configuration Document

LAN SETTINGS:

IP ADDRESS: 192.168.2.X where X can be anything between 2 and 254.

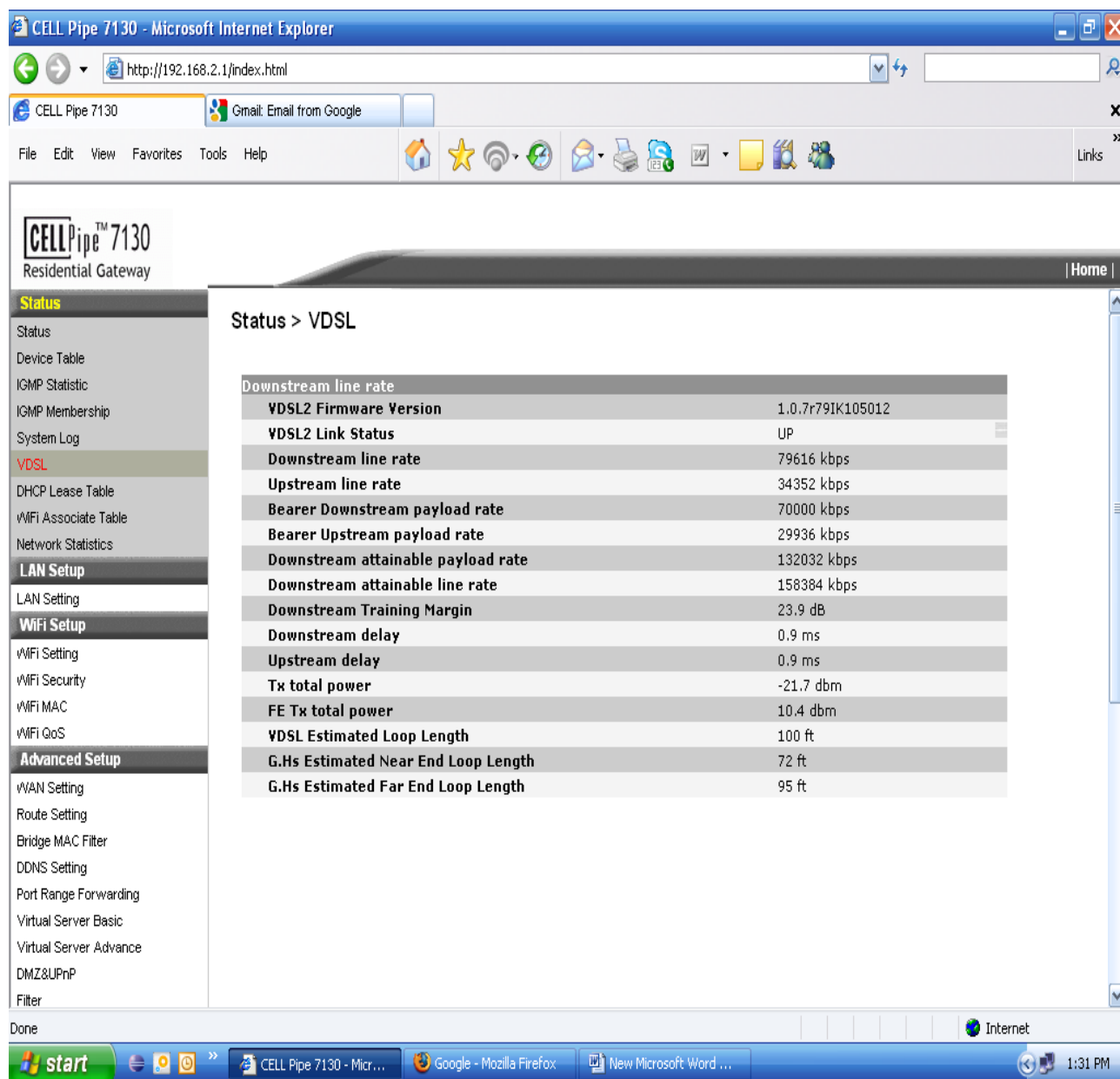
SUBNET MASK: 255.255.255.0

DEFAULT GATEWAY: 192.168.2.1

After this go to internet explorer and type <http://192.168.2.1> in the address bar.

Username: admin

Password: admin



The screenshot shows a Microsoft Internet Explorer browser window displaying the configuration page for a CELL Pipe 7130 Residential Gateway. The browser's address bar shows the URL <http://192.168.2.1/index.html>. The page content includes a navigation menu on the left and a main content area titled "Status > VDSL".

CELL Pipe™ 7130 Residential Gateway | Home

Status

- Status
- Device Table
- IGMP Statistic
- IGMP Membership
- System Log
- VDSL**
- DHCP Lease Table
- WiFi Associate Table
- Network Statistics

LAN Setup

- LAN Setting

WiFi Setup

- WiFi Setting
- WiFi Security
- WiFi MAC
- WiFi QoS

Advanced Setup

- WAN Setting
- Route Setting
- Bridge MAC Filter
- DDNS Setting
- Port Range Forwarding
- Virtual Server Basic
- Virtual Server Advance
- DMZ&UPnP
- Filter

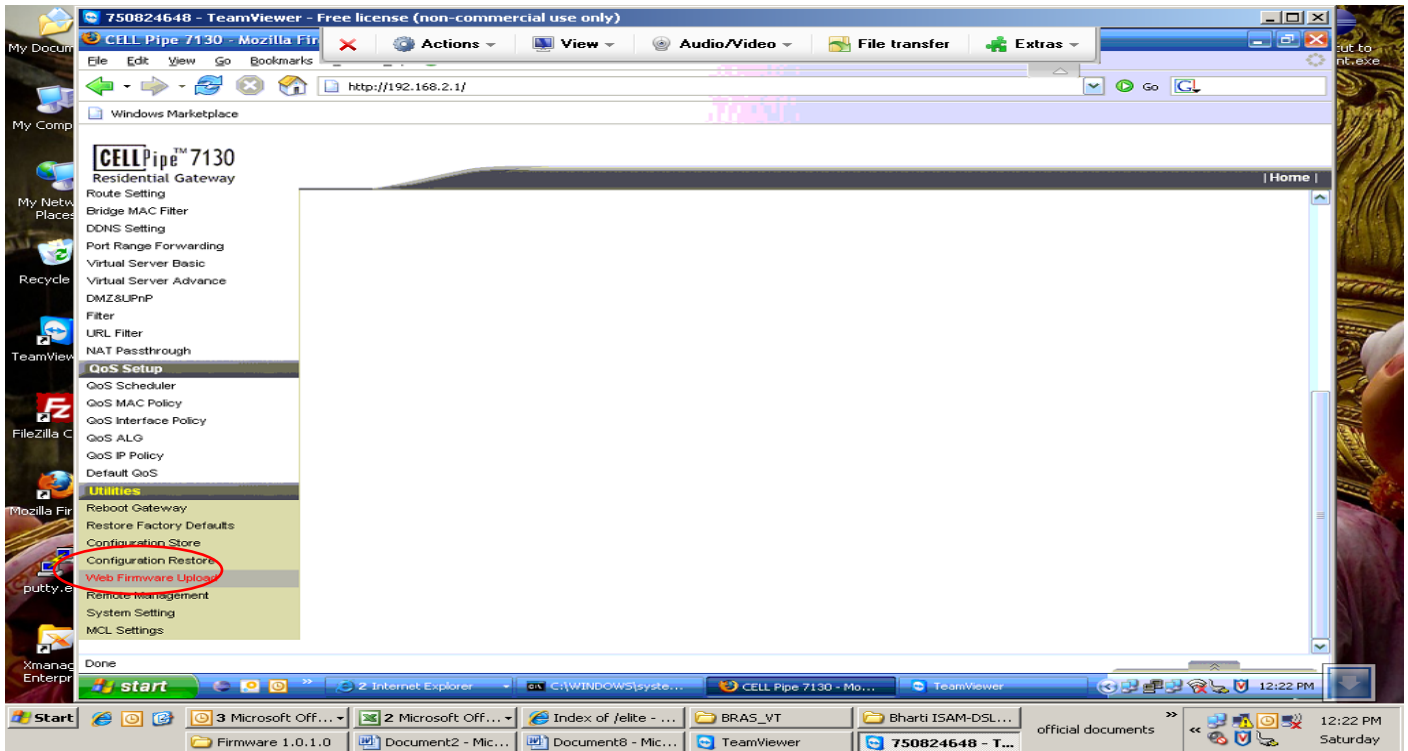
Status > VDSL

Downstream line rate	
VDSL2 Firmware Version	1.0.7r79IK105012
VDSL2 Link Status	UP
Downstream line rate	79616 kbps
Upstream line rate	34352 kbps
Bearer Downstream payload rate	70000 kbps
Bearer Upstream payload rate	29936 kbps
Downstream attainable payload rate	132032 kbps
Downstream attainable line rate	158384 kbps
Downstream Training Margin	23.9 dB
Downstream delay	0.9 ms
Upstream delay	0.9 ms
Tx total power	-21.7 dbm
FE Tx total power	10.4 dbm
VDSL Estimated Loop Length	100 ft
G.Hs Estimated Near End Loop Length	72 ft
G.Hs Estimated Far End Loop Length	95 ft

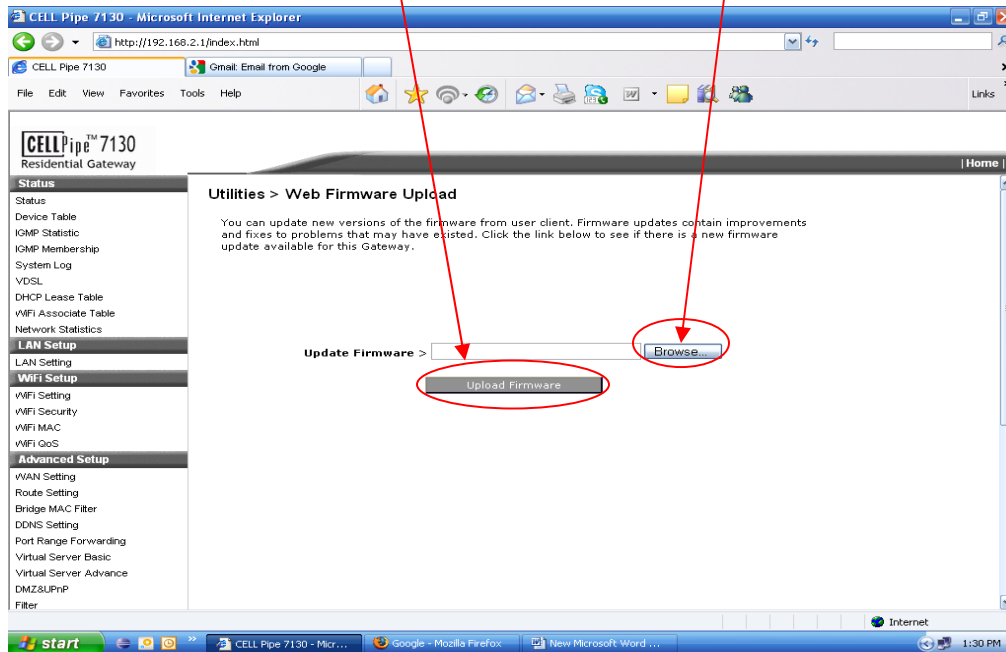
Done

start | CELL Pipe 7130 - Micr... | Google - Mozilla Firefox | New Microsoft Word ... | Internet | 1:31 PM

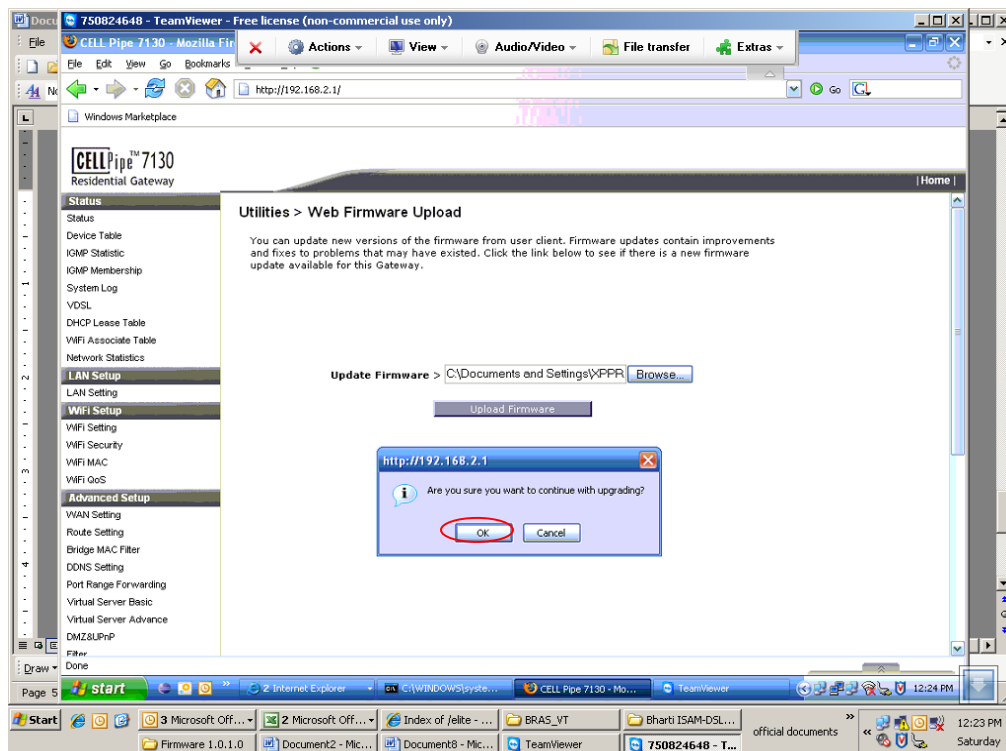
After login into modem at first we have to upgrade the firmware.
Down load the software from the Intranet (Broadband Documents and Guidelines) & save it to the desktop.
Then go to Utilities >> web firmware upload



Then click on browse >> select the software File saved on desktop >> upload firmware.

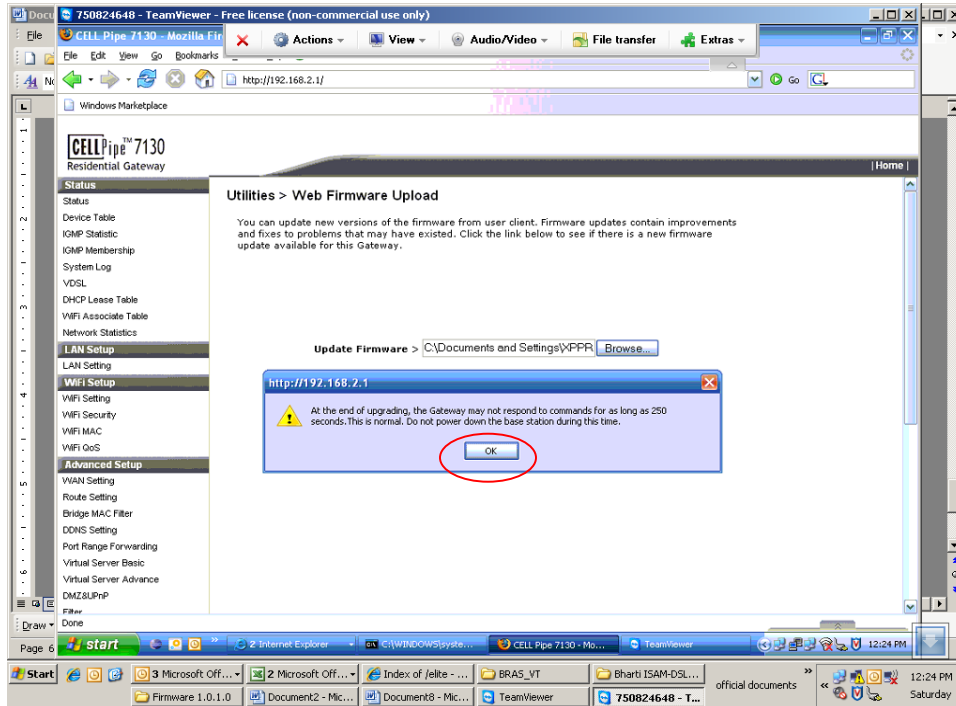


Then click on OK



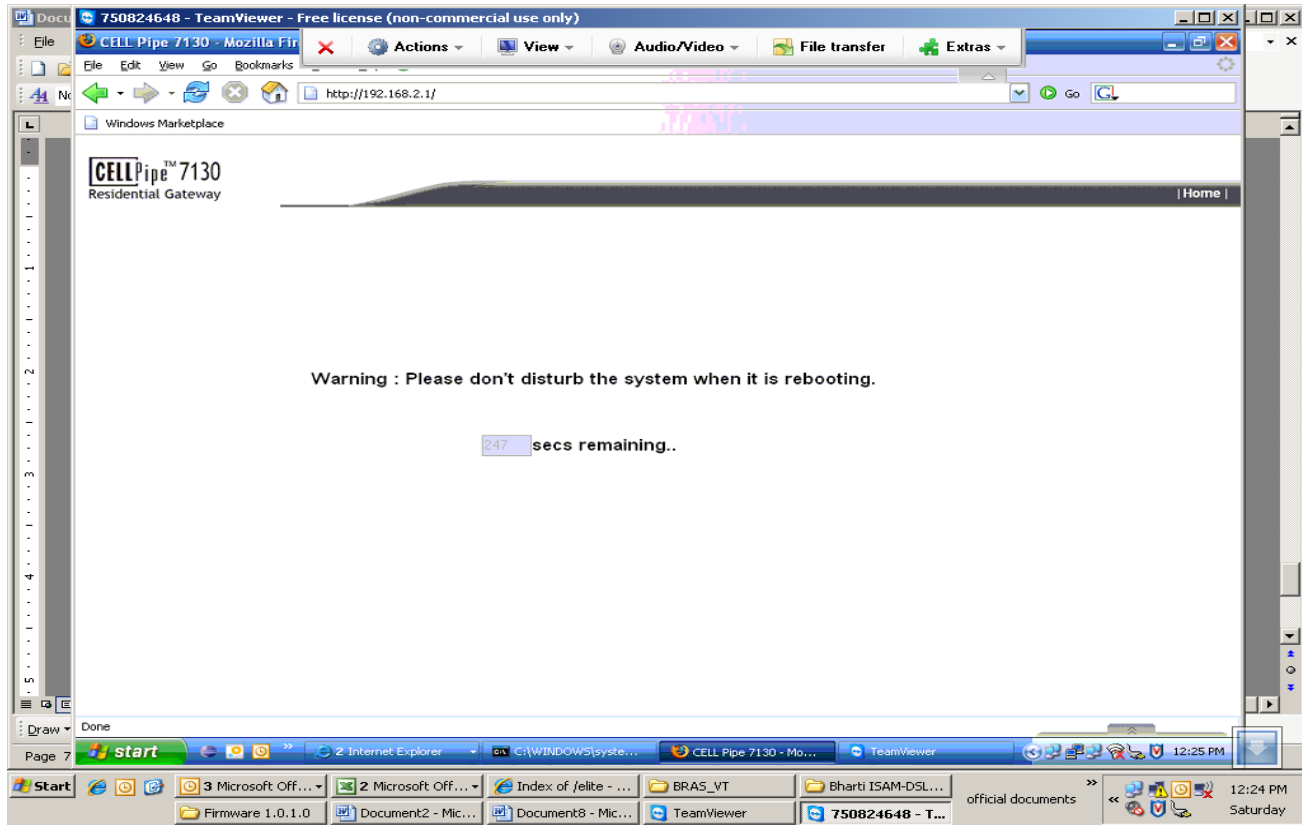
After that the following window will appear...

Then click on OK

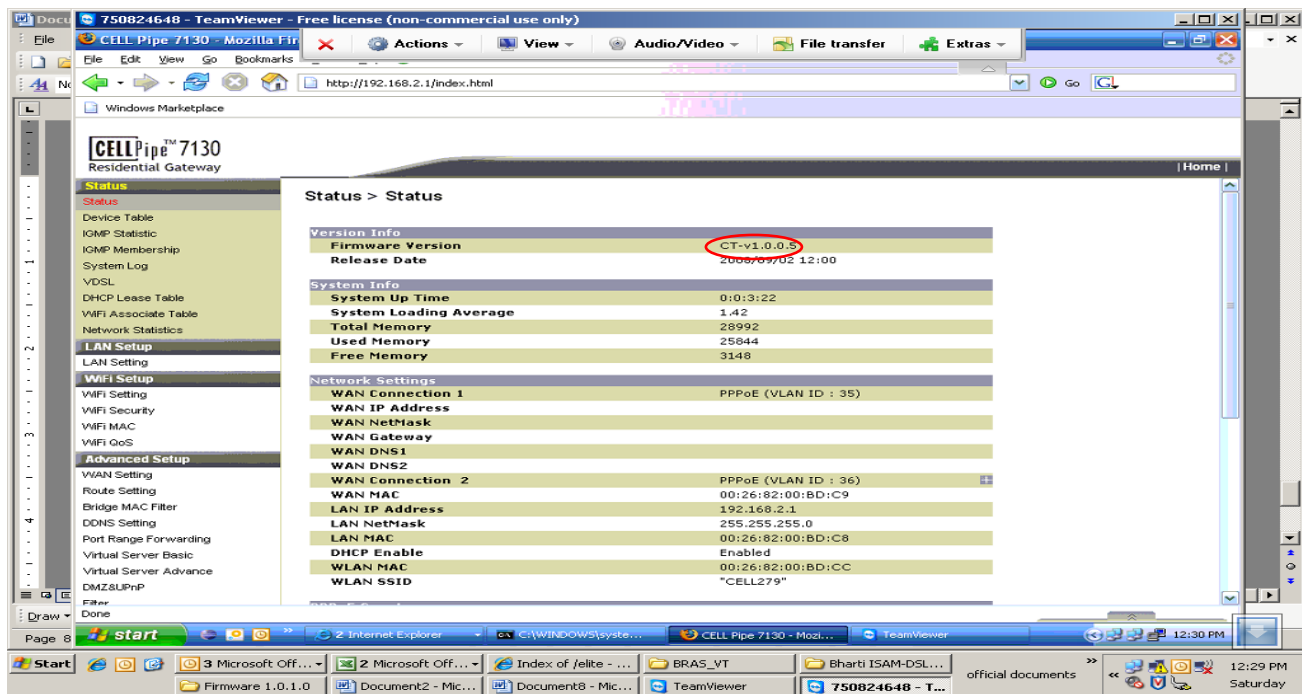


Wait for 250 sec as Modem will reboot.

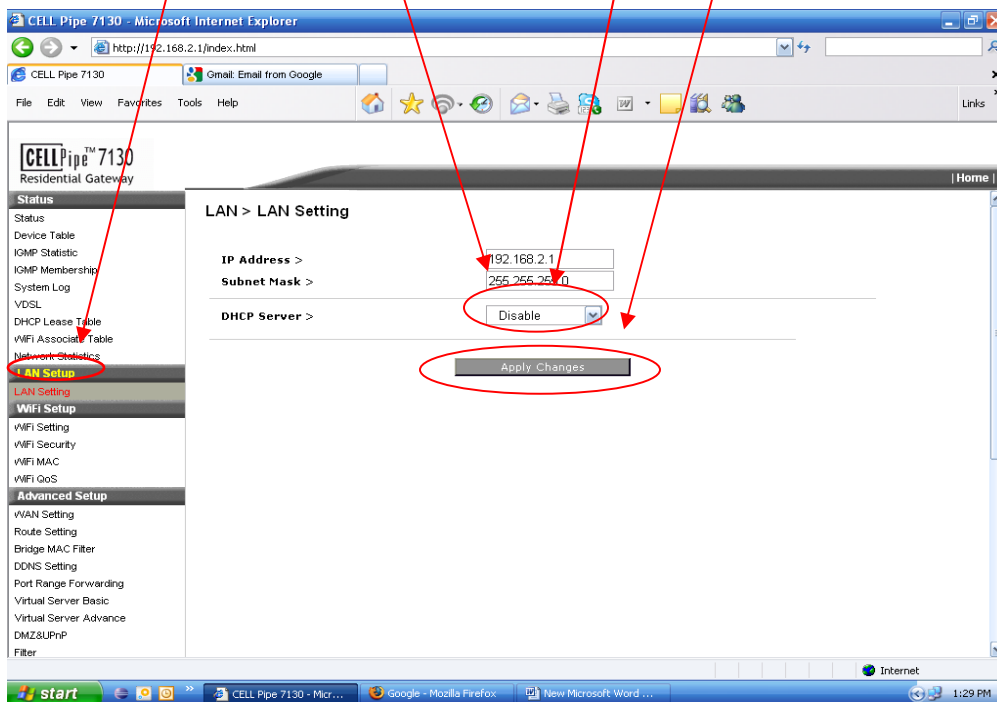
NOTE: PLEASE DON'T SWITCH OFF THE POWER SUPPLY !!



After rebooting the modem go to the **Status** & check the Firmware Version **CT-v1.0.0.5**

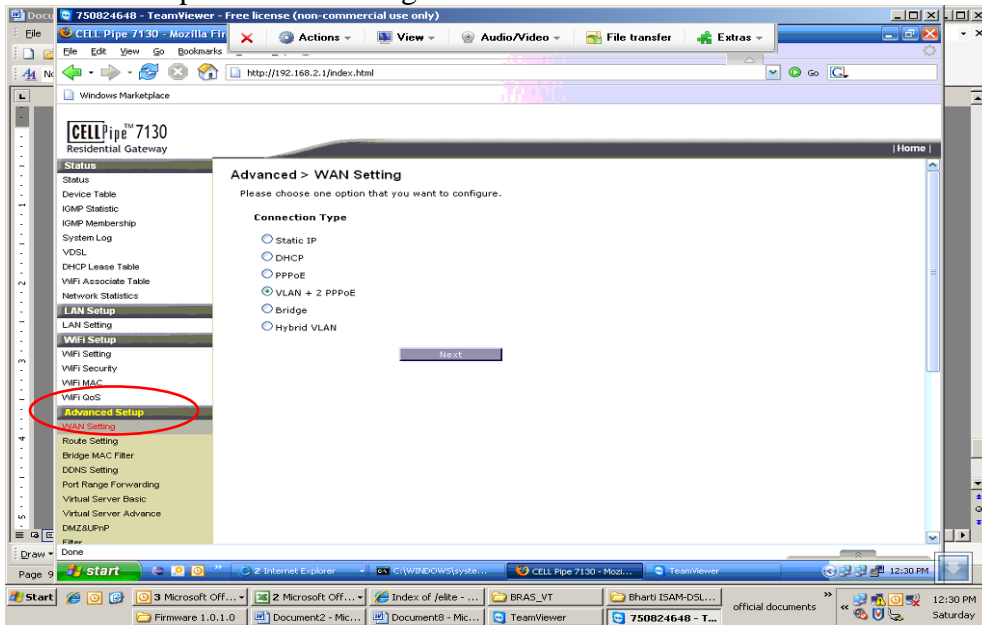


Then go to LAN settings >> DHCP Server >> Disable >> Apply Changes

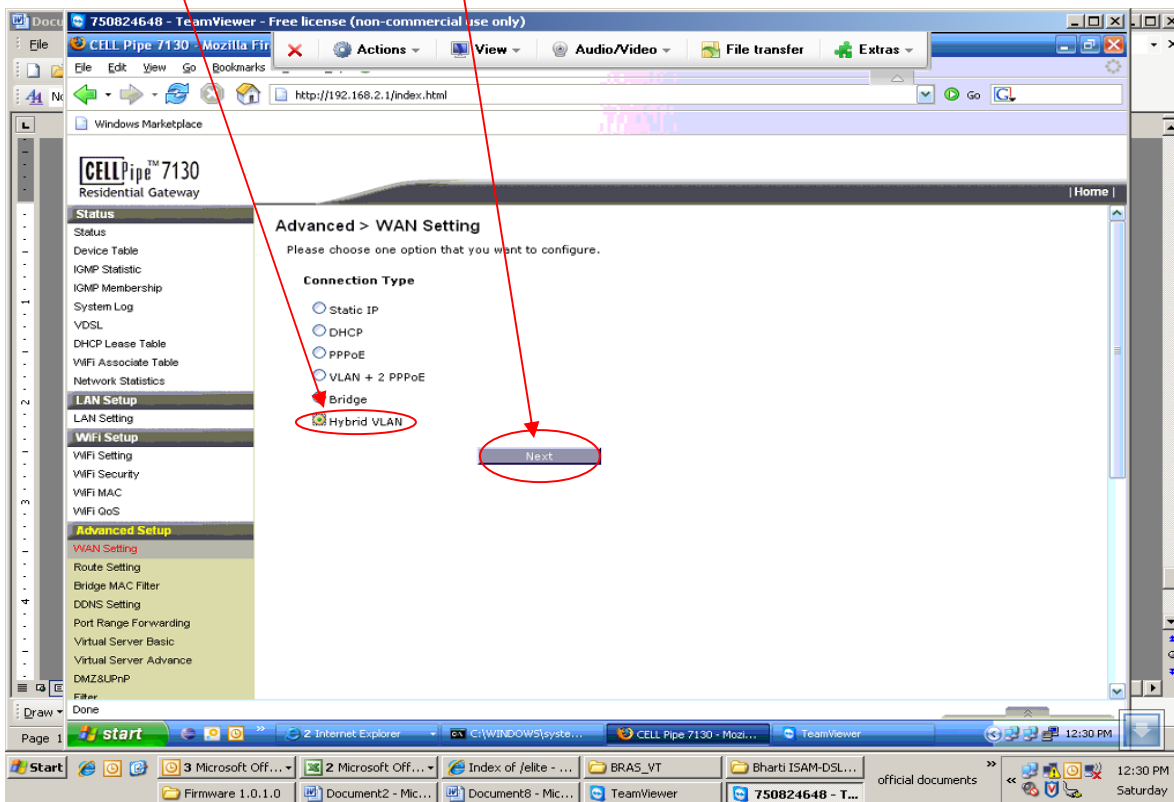


Then go to

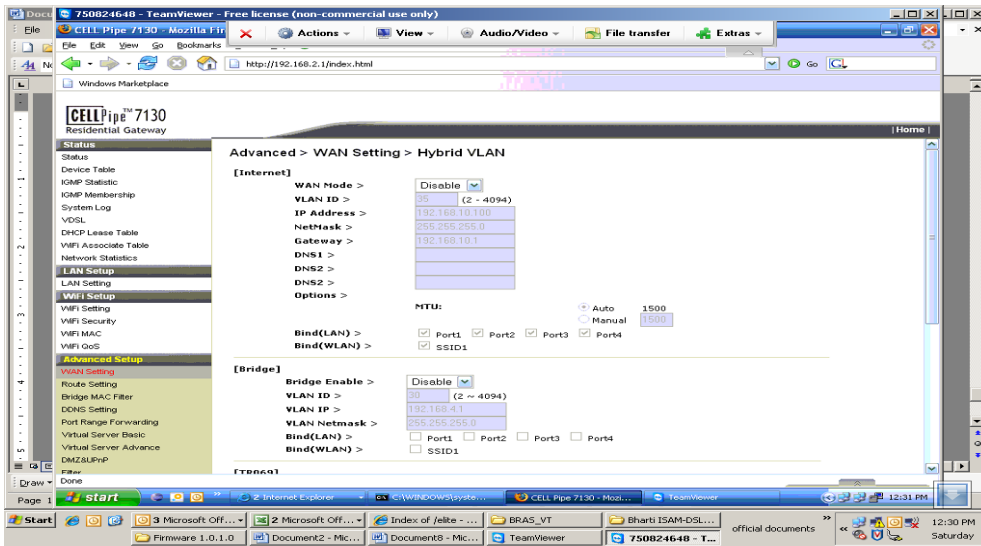
Advance setup >> WAN settings



Select Hybrid VLAN >> click on Next



After selecting Hybrid VLAN following window will appear:

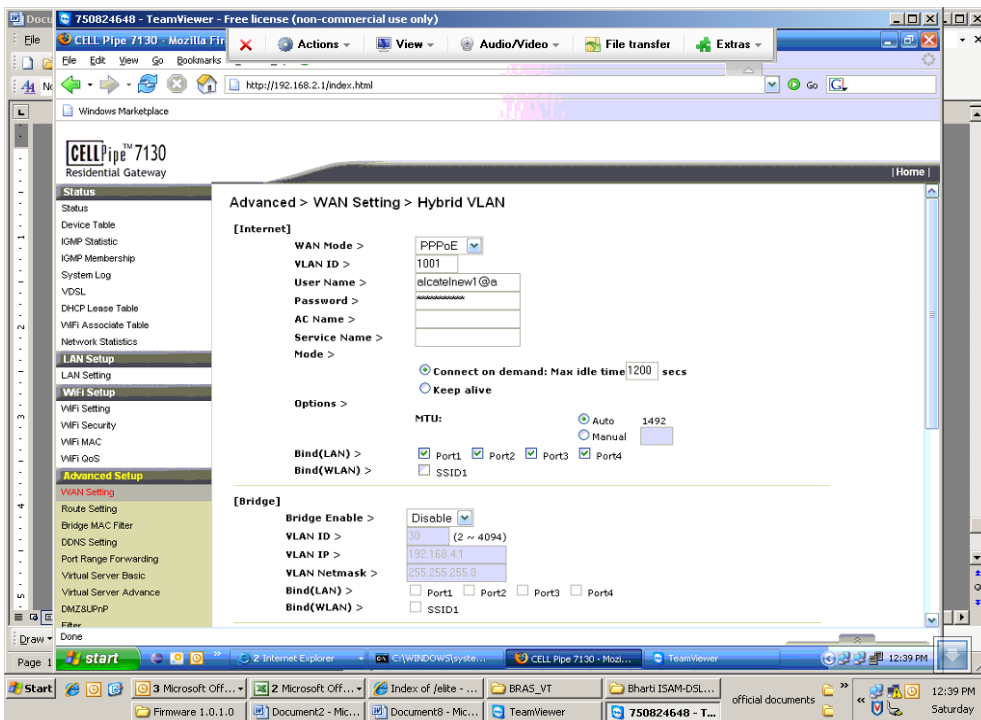


Select WAN Mode >> PPPoE

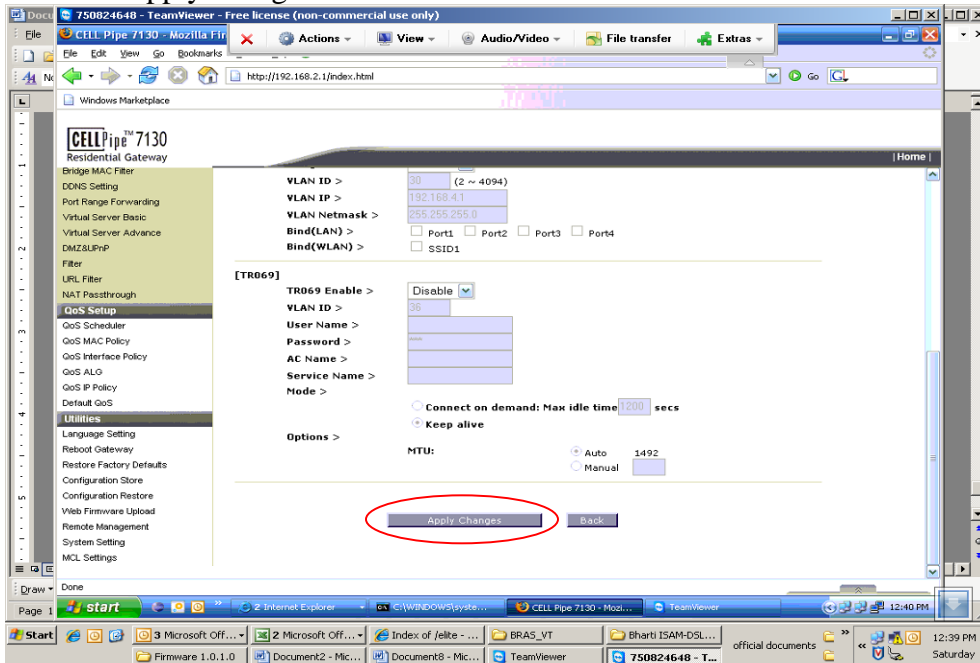
VLAN ID >> for example 1001 [Subscriber VLAN depending on which DSLAM port modem is connected]

User Name >> Telephone no @ a

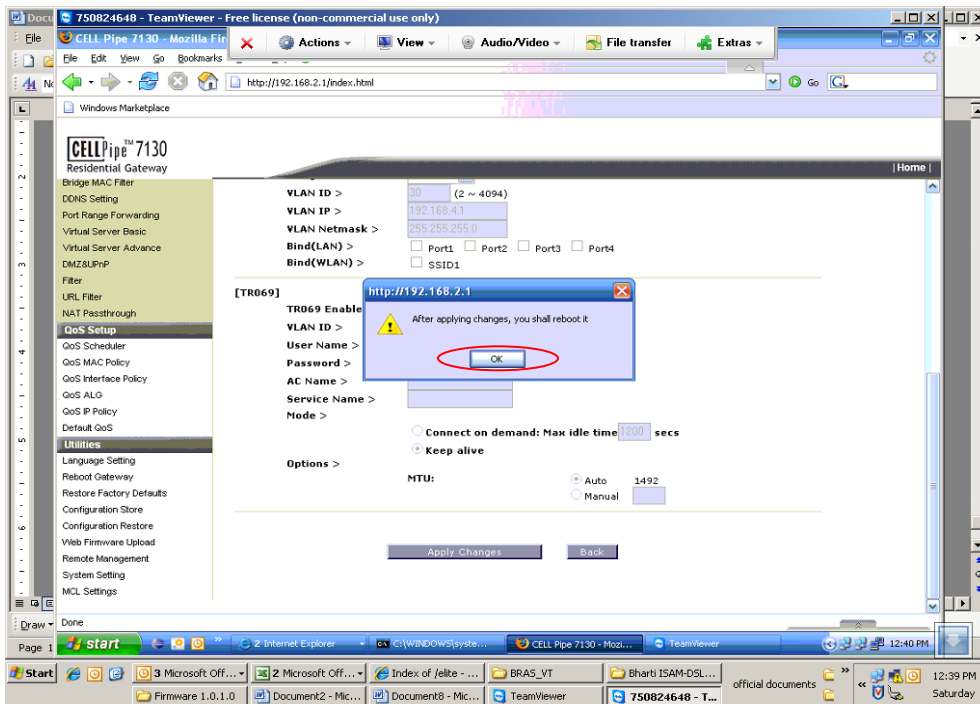
Password >> password



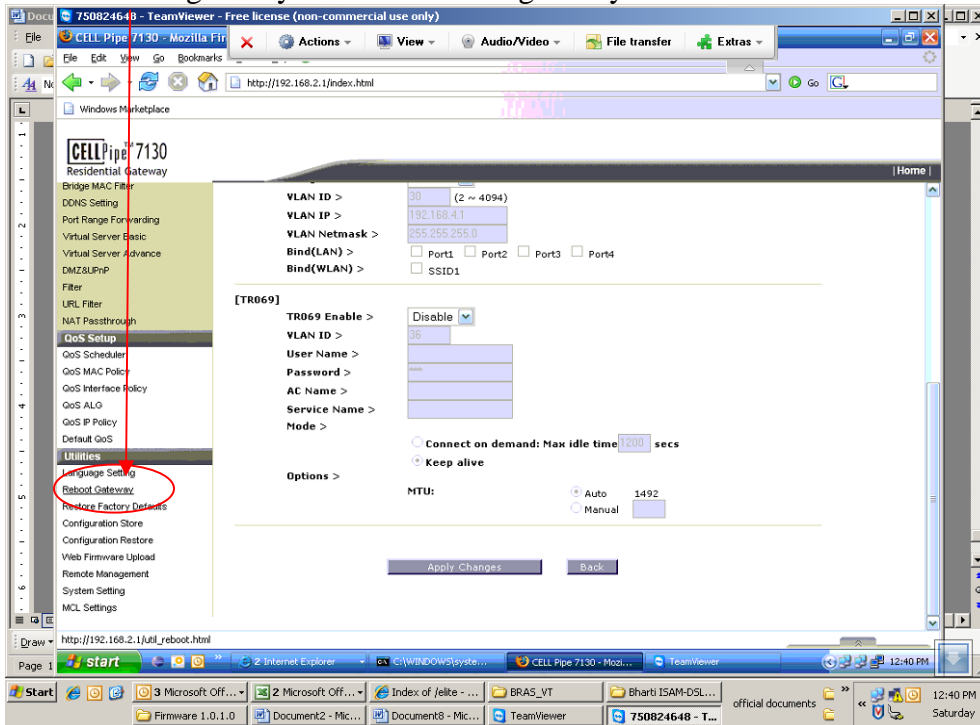
Click on Apply changes Tab



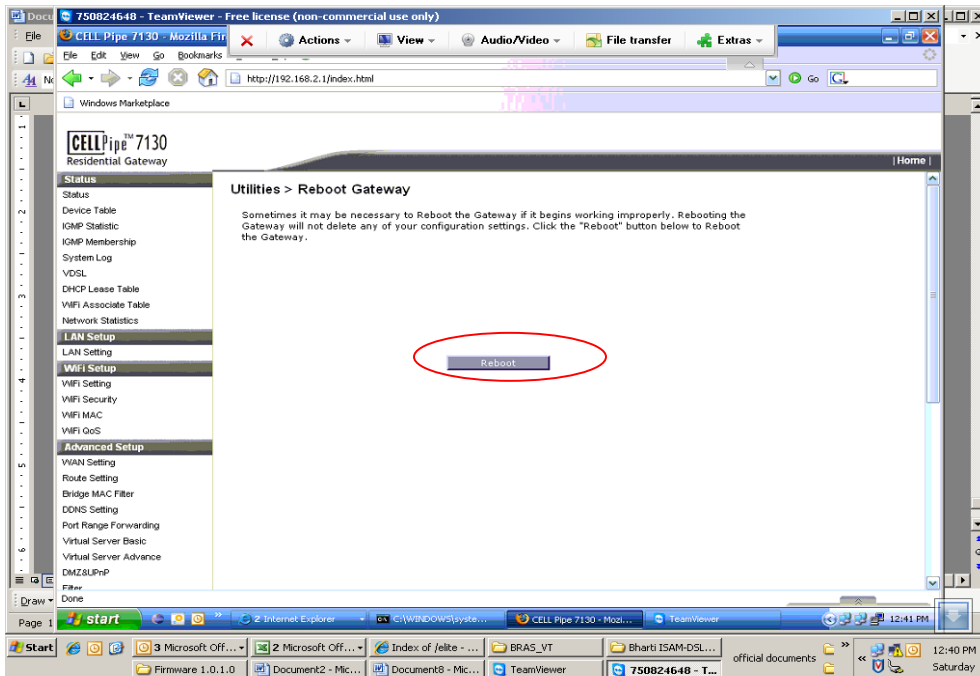
After that following window will appear
Click on OK



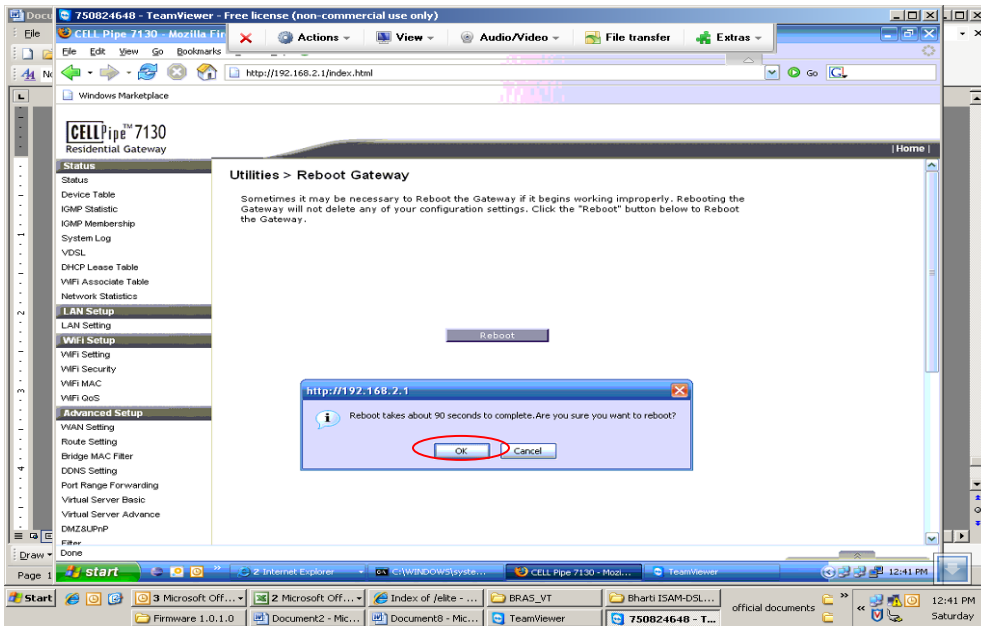
To reboot the gateway Click on Reboot gateway:



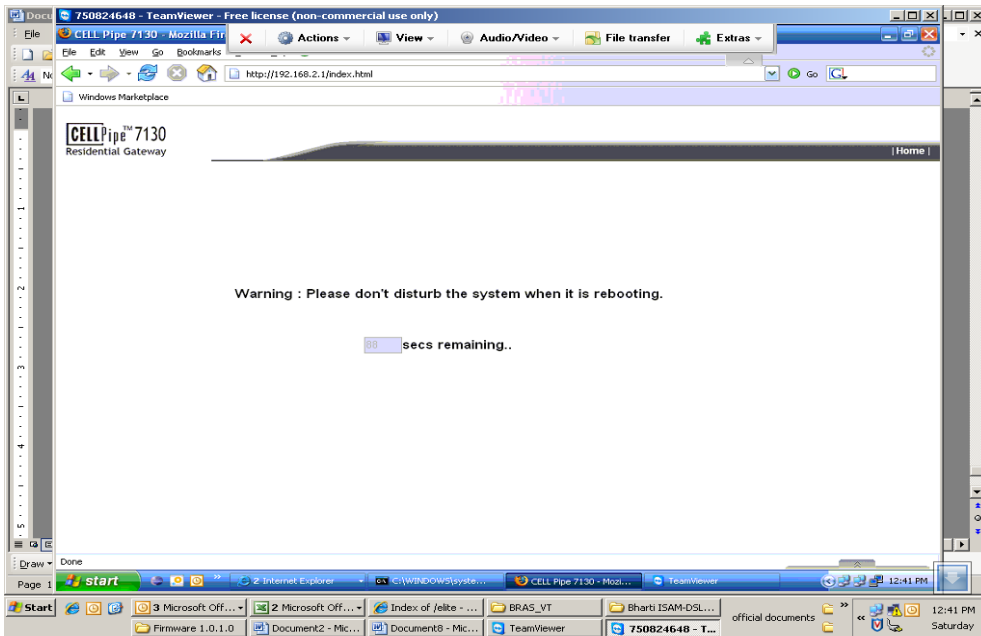
Then following window will appear...
Click on Reboot



Following window will appear.
Click on OK



Wait for 80 secs as modem will reboot.



When Modem gets synchronized & Internet LED on VDSL modem starts Blinking.

Then please check Status. We will get WAN IP address.

The screenshot shows the web interface of a CELL Pipe 7130 Residential Gateway. The browser window is titled "CELL Pipe 7130 - Microsoft Internet Explorer" and the address bar shows "http://192.168.2.1/index.html". The page title is "CELL Pipe 7130 Residential Gateway".

The left sidebar contains a navigation menu with the following items:

- Status (highlighted with a red circle)
- Device Table
- IGMP Statistic
- IGMP Membership
- System Log
- VDSL
- DHCP Lease Table
- vWiFi Associate Table
- Network Statistics
- LAN Setup
- LAN Setting
- WiFi Setup
- WiFi Setting
- WiFi Security
- WiFi MAC
- WiFi QoS
- Advanced Setup
- WAN Setting
- Route Setting
- Bridge MAC Filter
- DDNS Setting
- Port Range Forwarding
- Virtual Server Basic
- Virtual Server Advance
- DMZ&UPnP
- Filter

The main content area is titled "Status > Status" and displays the following information:

Version Info	
Firmware Version	CT-v1.0.0.5
Release Date	2008/09/02 12:00

System Info	
System Up Time	0:0:3:43
System Loading Average	2.04
Total Memory	28992
Used Memory	26068
Free Memory	2924

Network Settings	
WAN Connection 1	
Internet (VLAN ID : 1001)	
WAN IP Address	120.62.167.46
WAN NetMask	255.255.255.255
WAN Gateway	120.62.160.1
WAN DNS1	59.185.0.50
WAN DNS2	59.185.0.23
WAN Connection 2	
TR069 (VLAN ID : 36)	
WAN MAC	00:26:82:00:BD:C9
LAN IP Address	192.168.2.1
LAN NetMask	255.255.255.0
LAN MAC	00:26:82:00:BD:C8
DHCP Enable	Disabled
WLAN MAC	00:26:82:00:BD:CC
WLAN SSID	"CELL279"

The WAN IP Address "120.62.167.46" is circled in red. The taskbar at the bottom shows the Start button, taskbar icons for "CELL Pipe 7130 - Mic...", "Google - Mozilla Firefox", and the system clock showing "1:27 PM".