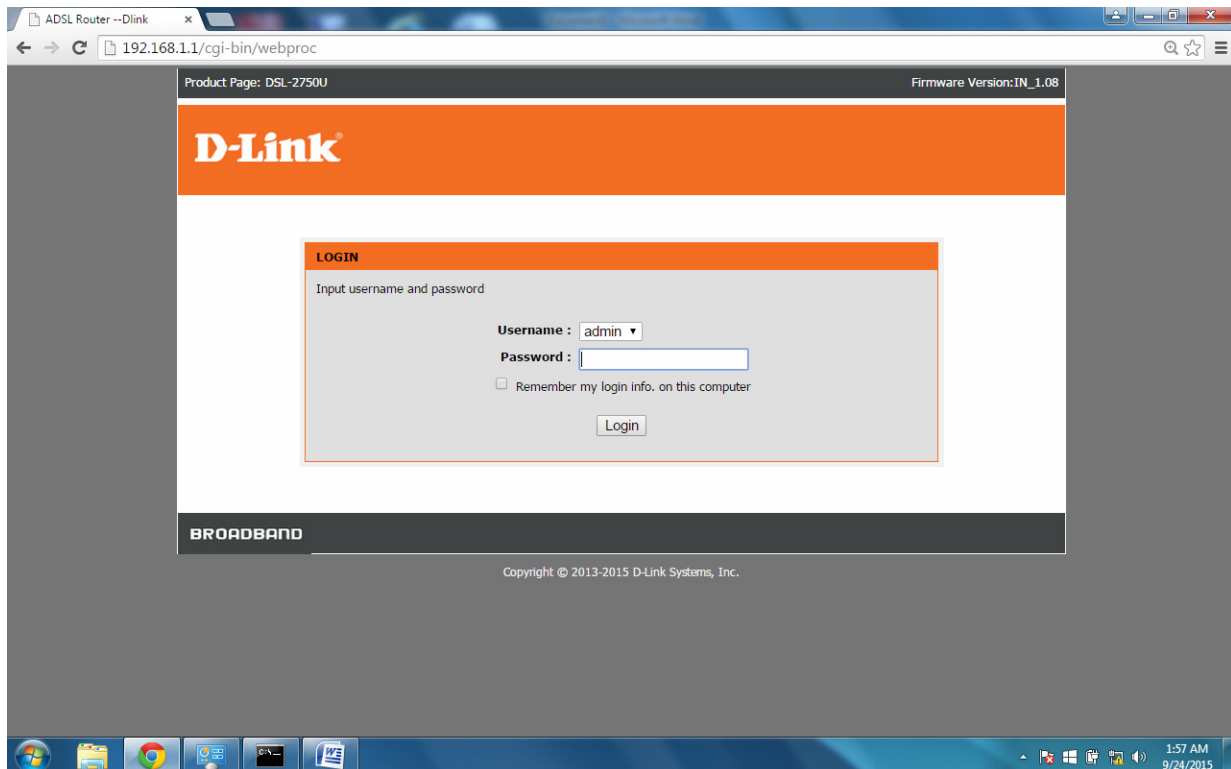


Configuration of D-Link Wireless N300 ADSL2+ Router Model DSL-2750U

Step-1

Open the router page <http://192.168.1.1>

You will get screen as below

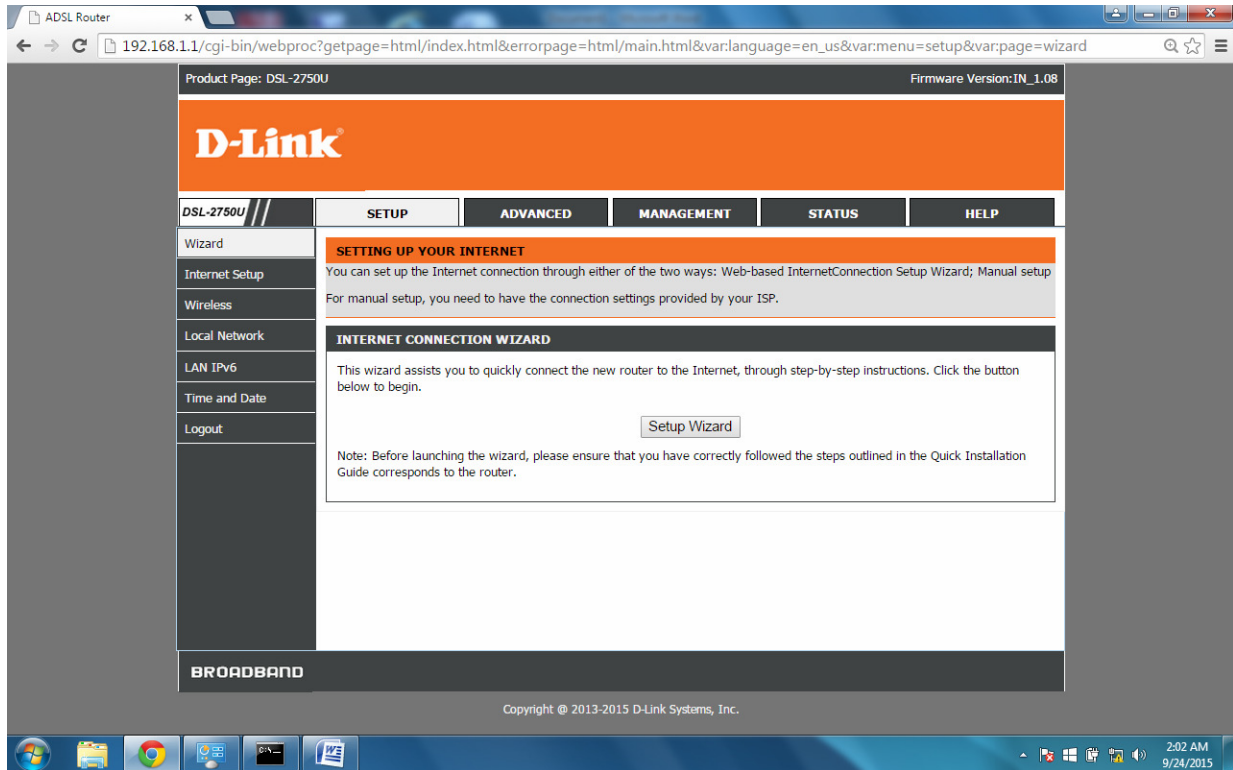


Step-2

Enter Username :- admin Password :- admin

Click Login button

You will get screen as below

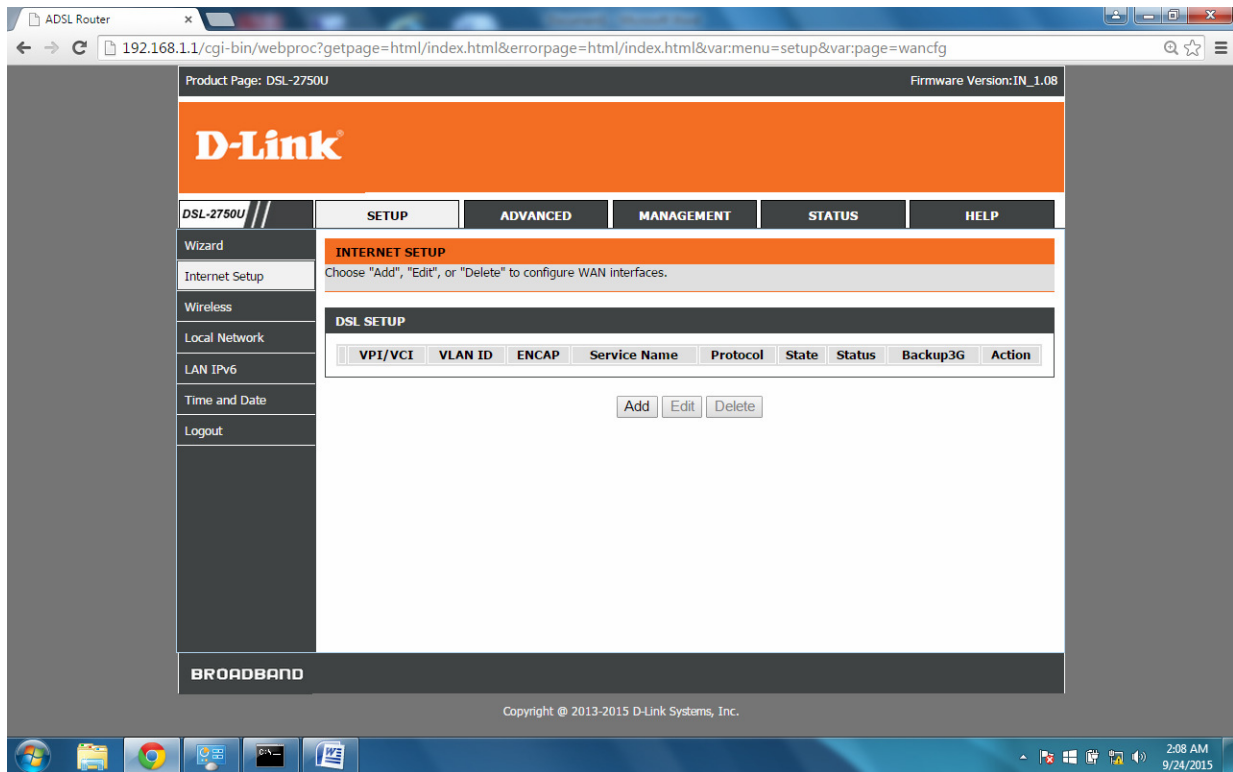


Step:-3

Click on SETUP

Click Internet Setup

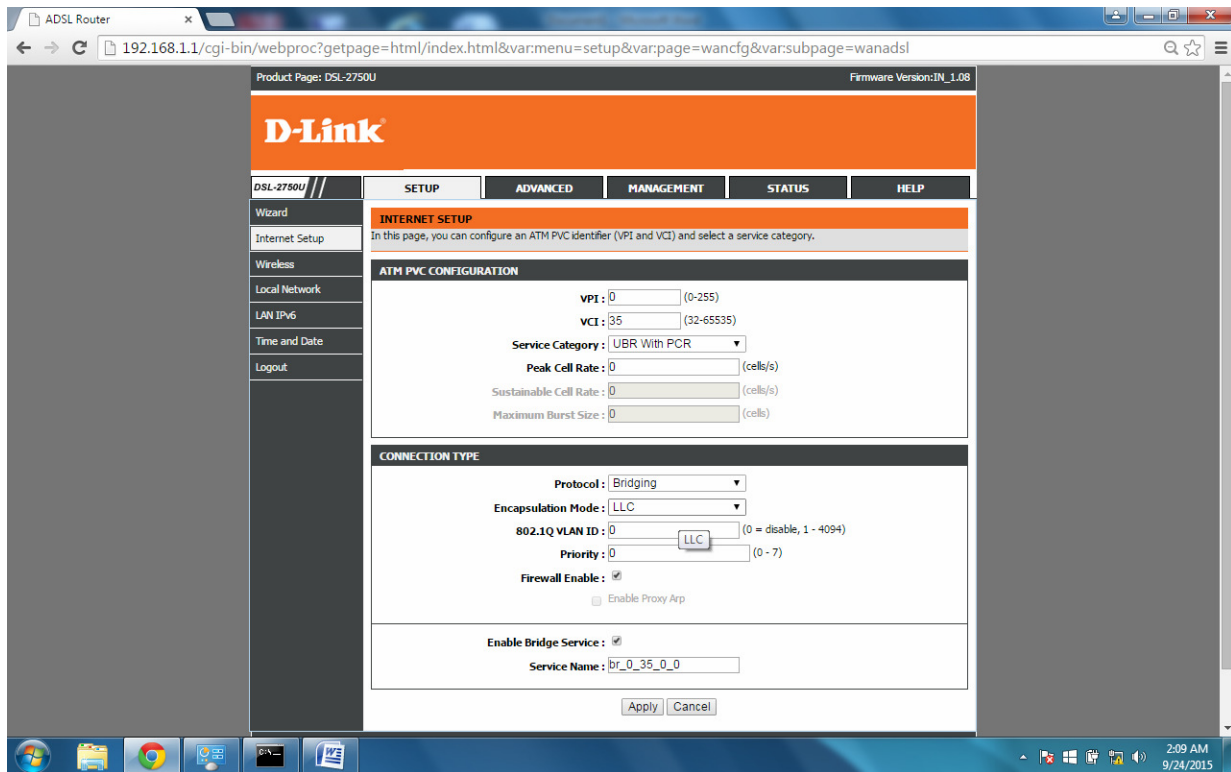
You will get screen as below



Step:-4

Click on Add button

You will get screen as below



Step:-5

Change the value of PVC 0, VPI 0 & VCI 32

Select Protocol as PPP over Ethernet

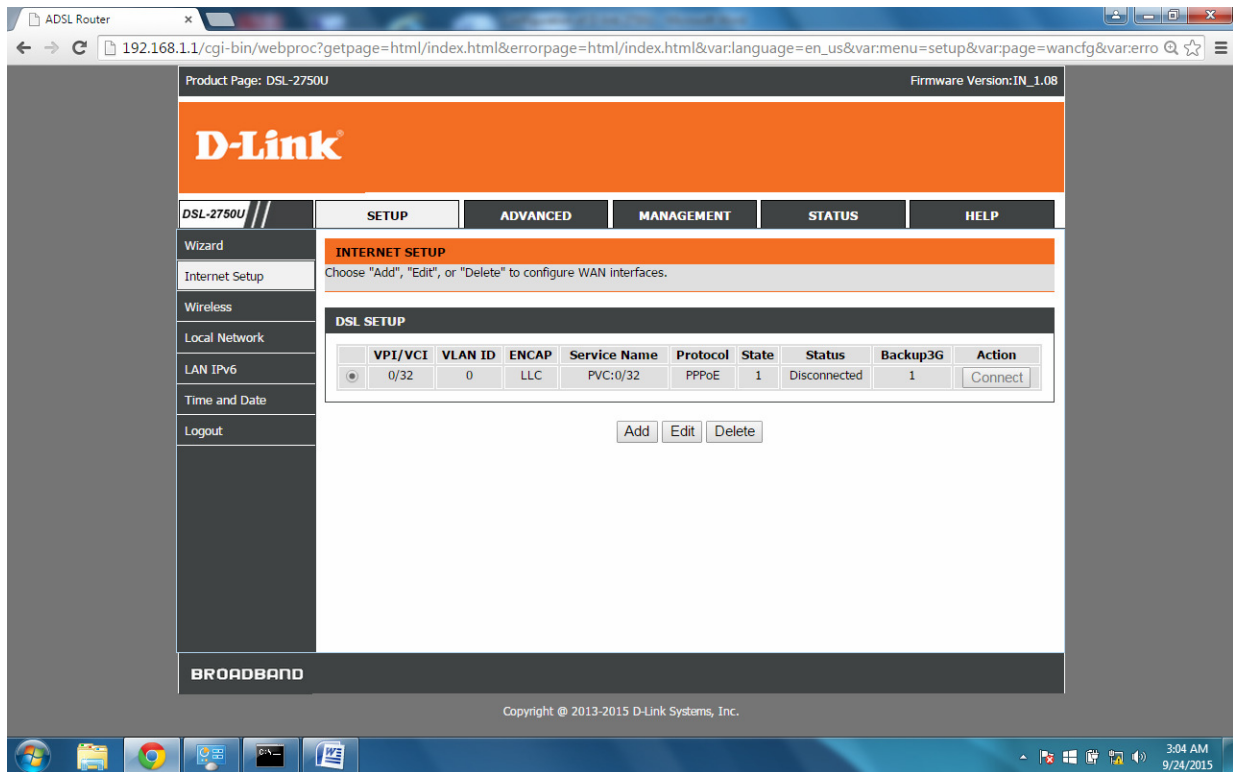
PPP Username as Customer's Telephone No. suffix @a in case of Crystal

PPP Password as Customer's CA No.

Confirm PPP Password as Customer's CA No.

Click Apply button.

You will get screen as below-

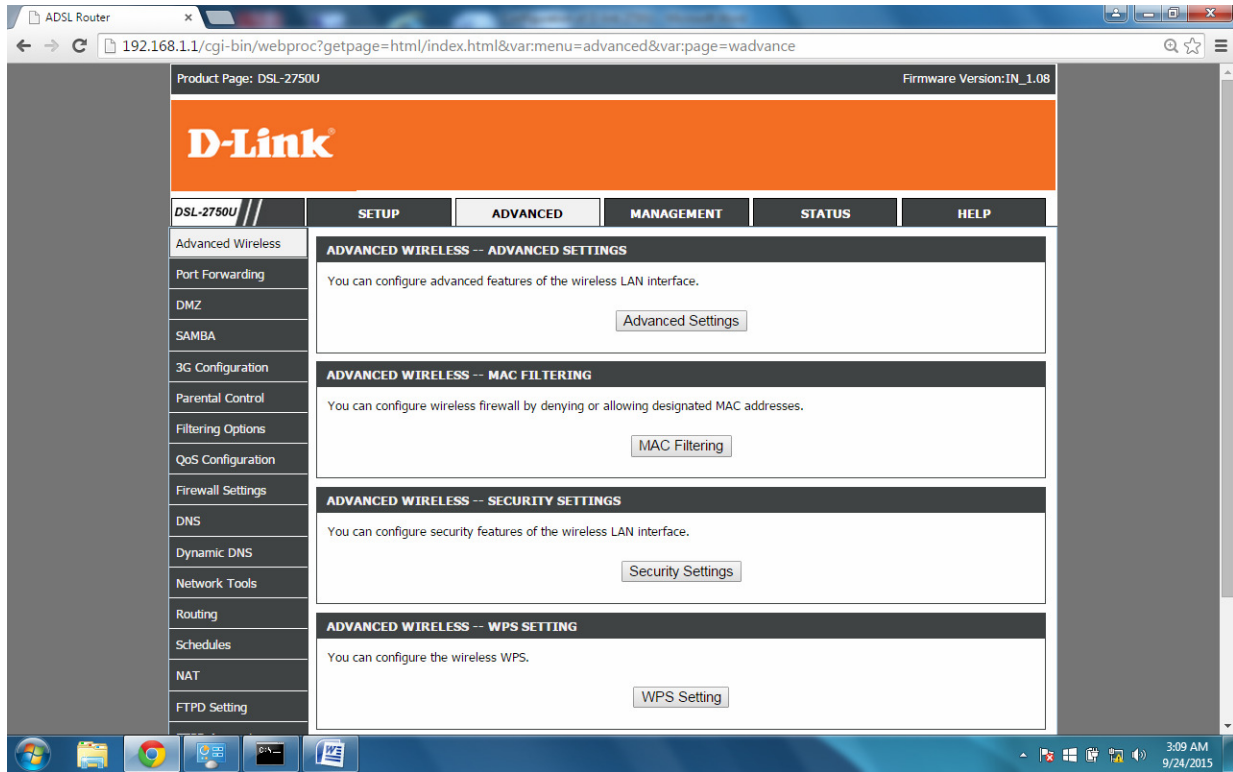


Step:- 6

To Insert DNS value in Router

Click on ADVANCED

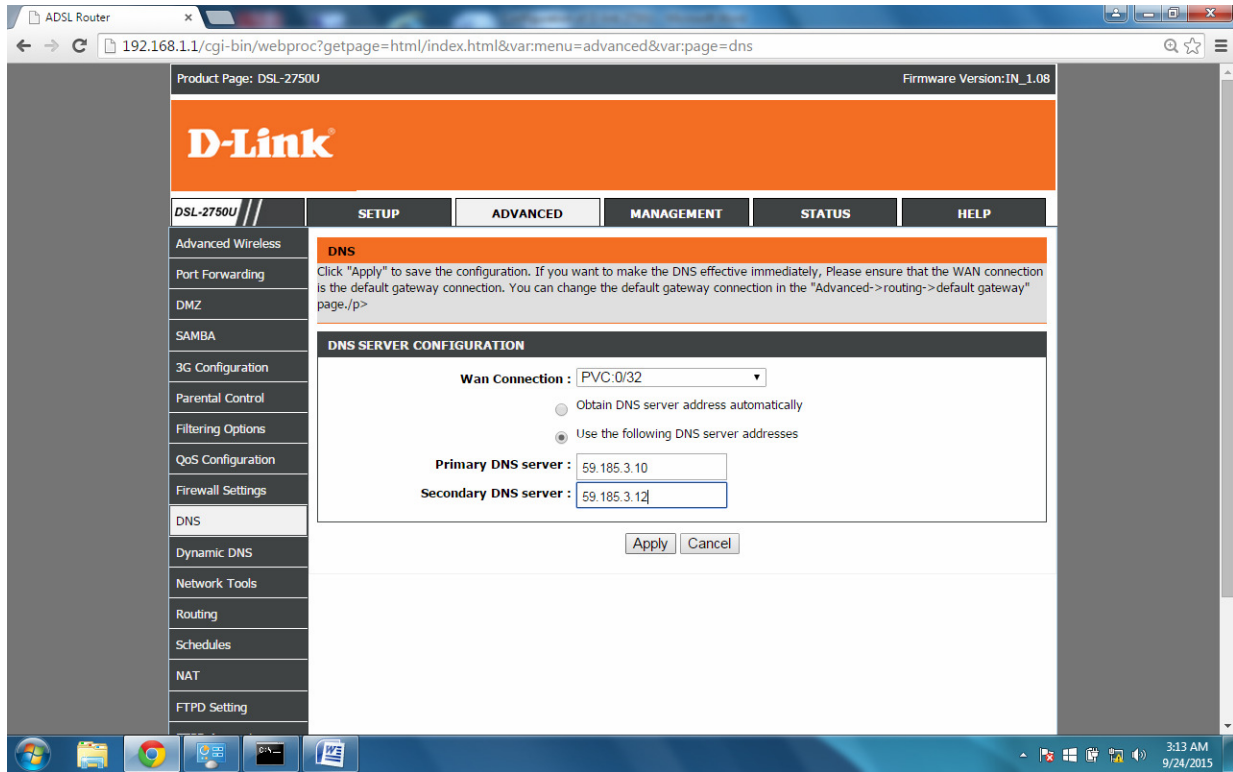
You will get seen as below-



Click on DNS

Select Use the following DNS Addresses

You will get screen as below-



Click on Apply button

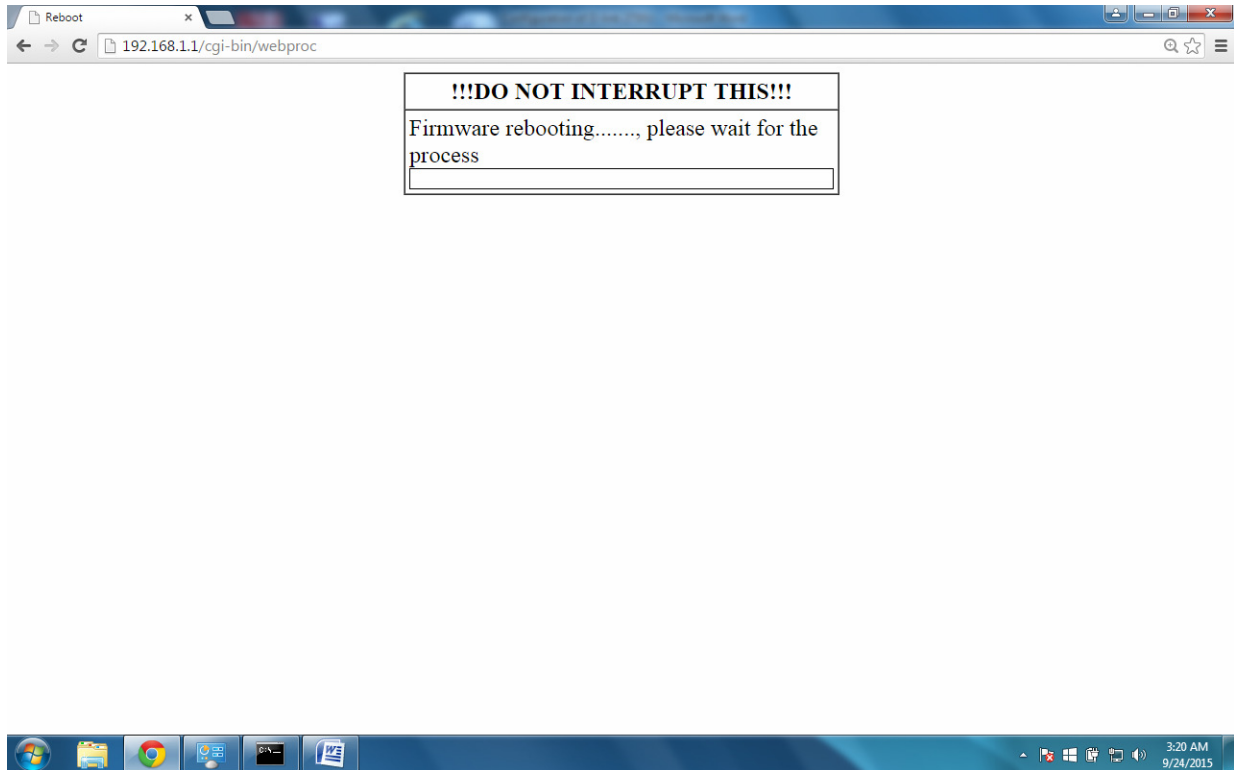
Step:-7

Save the configuration of Modem

Click on MANAGEMENT

CLICK on Reboot

You will get screen as below-



After 2 Minutes You will get internet.

Congratulation.

Thanking you

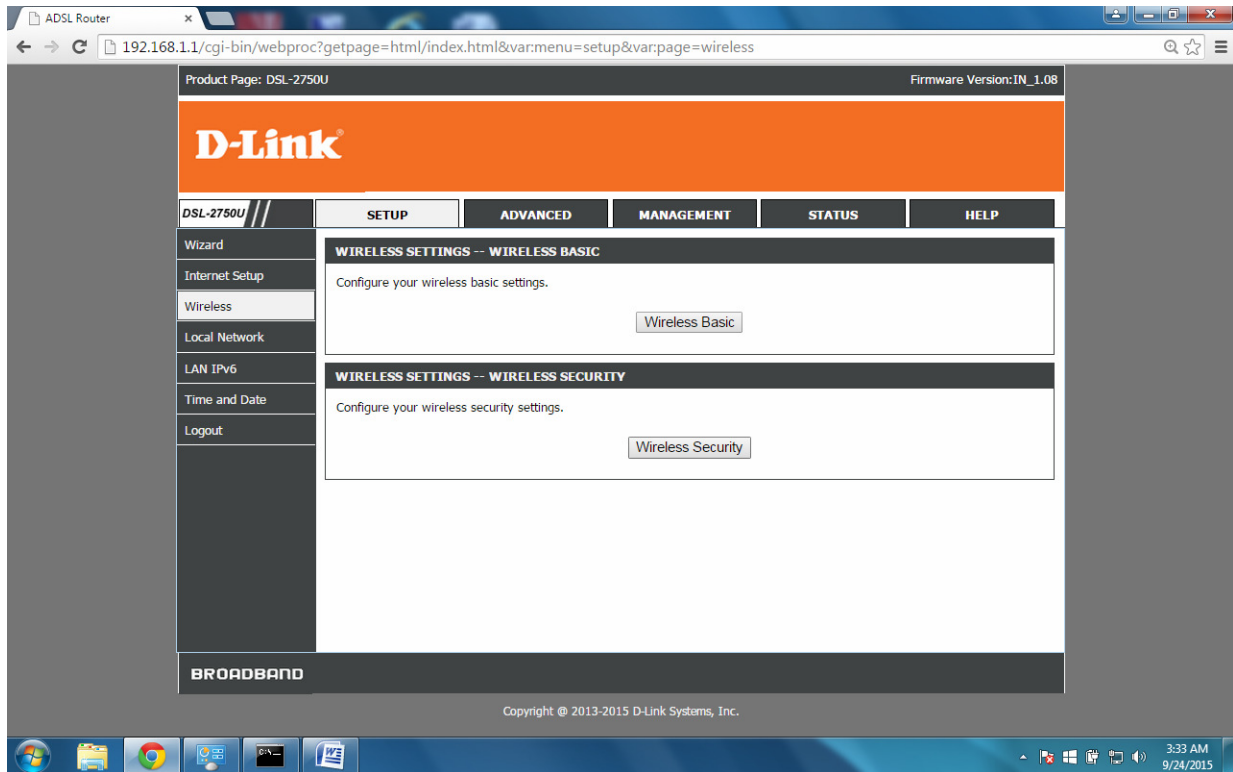
DE BB HD

MTNL MUMBAI

Wireless Setting

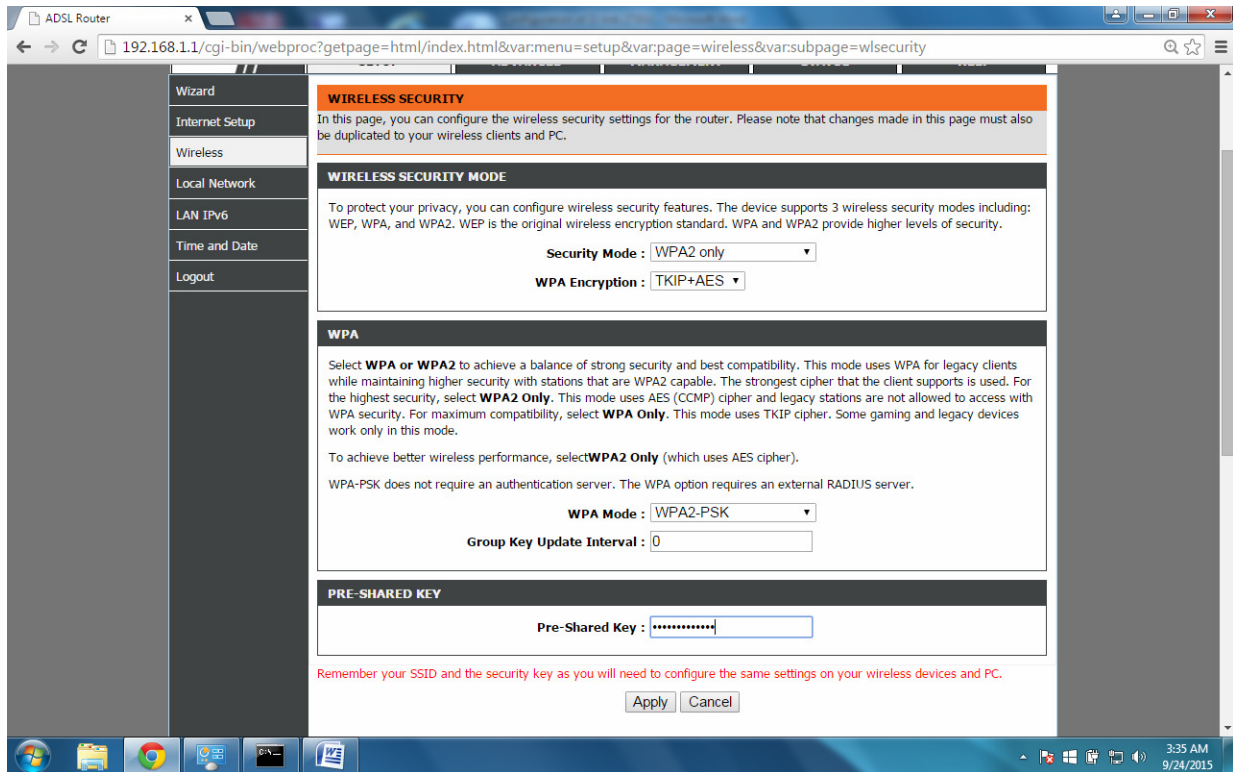
Click on SETUP then Wireless

You will get screen as below-



Click on Wireless Security

You will get screen as below-



Delete the existing password under Pre-Shared Key and

Enter minimum 13 characters/alphabets /signs as password

Click Apply button.

Save the configuration of Modem

Click on MANAGEMENT

CLICK on Reboot

